

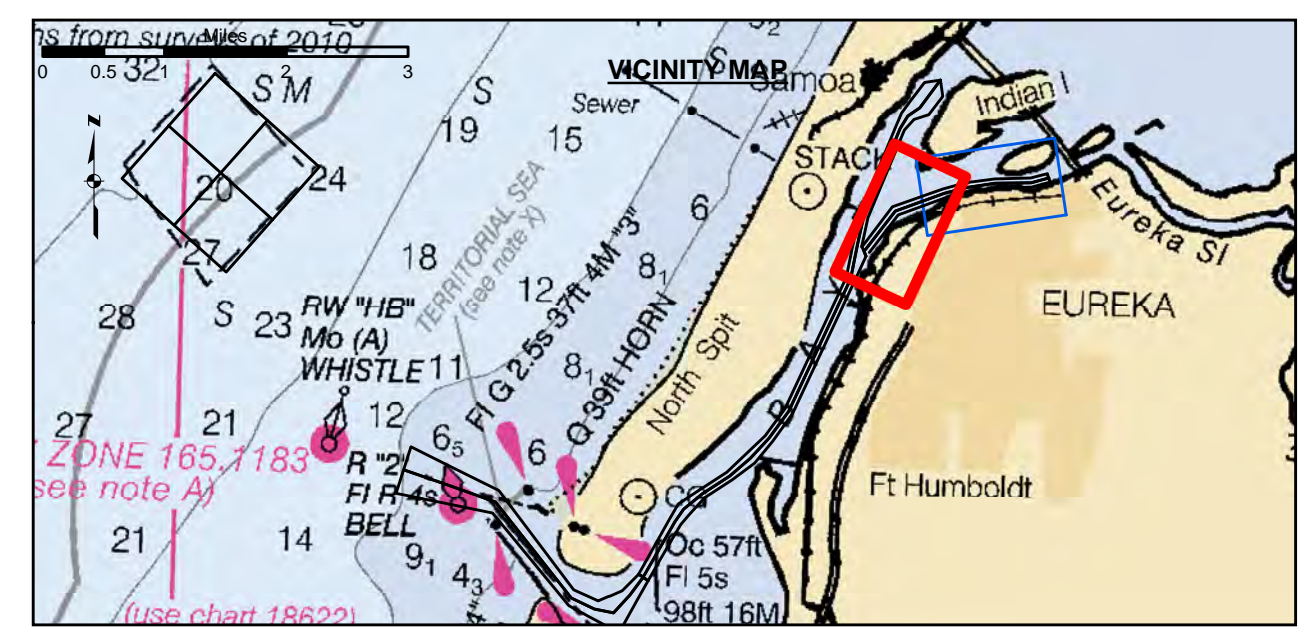
US Army Corps of Engineers
 San Francisco District
 1455 Market Street
 San Francisco, CA 94103

PRELIMINARY ISSUE
 THIS PLAN ISSUED FOR
 ADVANCE INFORMATION ONLY

DISCLAIMER
 The United States Government furnishes this information for the use of the user in accordance with the terms of the license. The user is responsible for the results of any application of the data for other than its intended purpose. The user is responsible for the results of any application of the data for other than its intended purpose. The user is responsible for the results of any application of the data for other than its intended purpose.

Chart Date:	Apr 08, 2020
Designed by:	PDT
Plotted by:	PDT
Checked by:	PDT
Drawn by:	PDT

Angle Point	Easting	Northing
01E	5956172.98	2181852.13
02E	5957495.79	2183569.43
03E	5959682.09	2184360.53
04E	5960648.49	2184617.53
05E	5961936.19	2184796.03
06E	5963483.19	2184829.53
07E	5964225.19	2185019.53
08E	5964324.49	2184632.13
09E	5963537.79	2184430.63
10E	5961968.09	2184396.63
11E	5960727.59	2184224.73
12E	5959501.69	2183978.43
13E	5957741.49	2183232.93
14E	5956489.79	2181608.03
E1	5956331.39	2181730.13
E2	5957618.69	2183401.23
E3	5959741.89	2184169.53
E4	5960588.09	2184421.13
E5	5961952.09	2184596.33
E6	5963510.49	2184630.03
E7	5964274.85	2184825.82



Federal Navigation Channel	Beacon, General	Contours
Shoaling Area	Obstruction Point	-26
Placement Area	Navigation Buoy	-25
Anchorage Area	Navigation Buoy	-24
Wreck Area	Shoalest Sounding*	-23
Submerged Wreck		-22
Angle Point		

NOTES:
 DRAWINGS NOT TO BE USED AS NAVIGATION. ONLY CHANNEL CONDITION AT DATE OF SURVEY. THE LOCATION OF ALL NAVIGATION AIDS ARE BASED ON INFORMATION PROVIDED BY THE U.S. COAST GUARD. BUOY LOCATION REPRESENT THE POSITION OF THE SINKER ONLY.

SOUNDINGS REFERENCED TO SURVEY CONTROLS BELOW

NOAA TIDE STATION:
 9418767, NORTH SPIT
 PUBLISHED Oct 2011

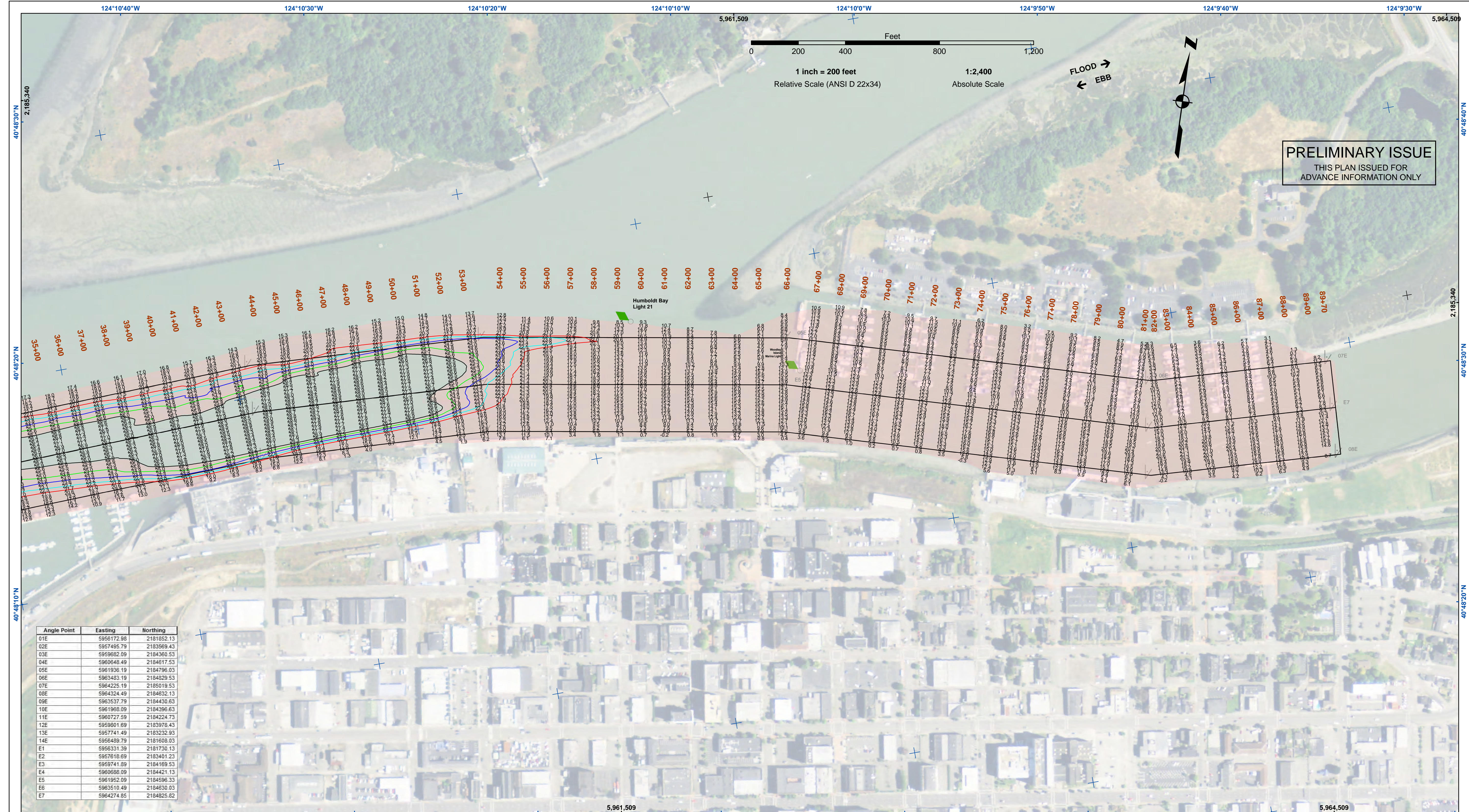
CONTROL BENCHMARK:
 V 1403 1988 (LV0637)
 OPUS April 2020

TIDES:
 MLLW CORRECTIONS DERIVED FROM VDATUM v4.0.1 USING GEOID18
 ORTHOMETRIC HEIGHTS

POSITION:
 RTK POSITIONING

HUMBOLDT COUNTY
HUMBOLDT BAY
EUREKA CHANNEL
CONDITION SURVEY
 1-5 APRIL 2020

Sheet Number
 1 of 2



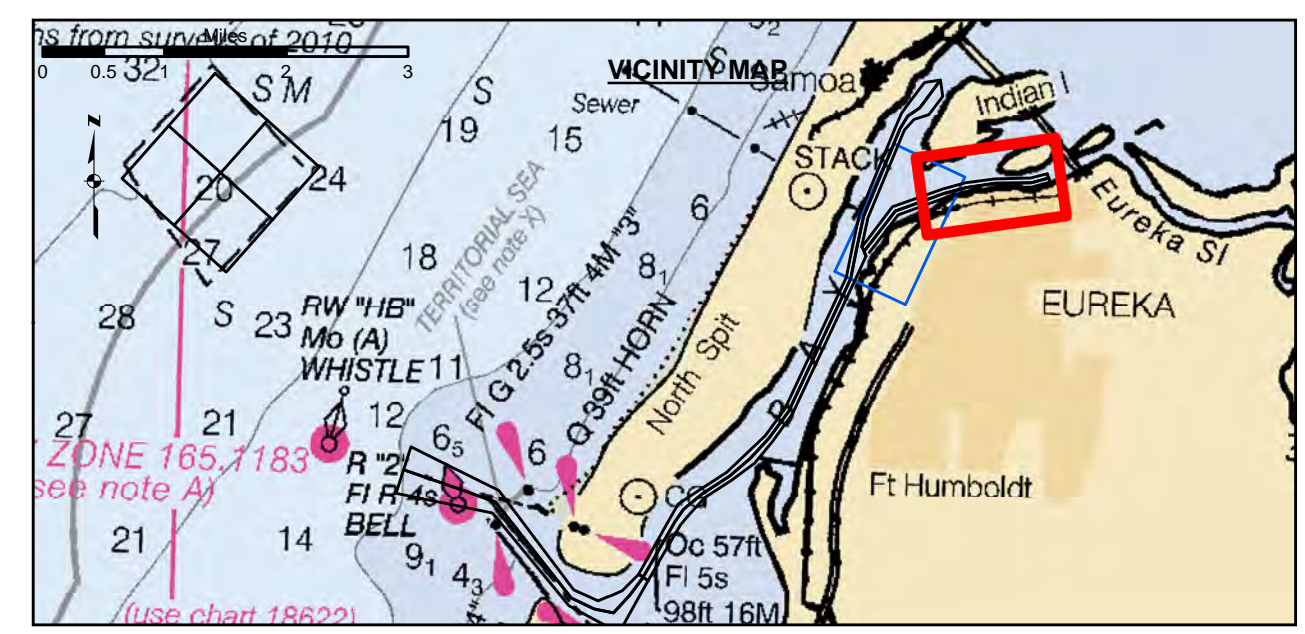
US Army Corps of Engineers
 San Francisco District
 1455 Market Street
 San Francisco, CA 94103

PRELIMINARY ISSUE
 THIS PLAN ISSUED FOR
 ADVANCE INFORMATION ONLY

DISCLAIMER
 The United States Government furnishes this information as a service to the user. It is not intended to be used for navigation. The user is responsible for the results of any application of this data for other than its intended purpose. The user is responsible for the results of any application of this data for other than its intended purpose. The user is responsible for the results of any application of this data for other than its intended purpose. The user is responsible for the results of any application of this data for other than its intended purpose.

Angle Point	Easting	Northing
01E	5956172.98	2181852.13
02E	5957495.79	2183569.43
03E	5959682.09	2184360.53
04E	5960648.49	2184617.53
05E	5961936.19	2184796.03
06E	5963483.19	2184829.53
07E	5964225.19	2185019.53
08E	5964324.49	2184632.13
09E	5963537.79	2184430.63
10E	5961968.09	2184396.63
11E	5960727.59	2184224.73
12E	5959501.69	2183978.43
13E	5957741.49	2183232.93
14E	5956489.79	2181608.03
E1	5956331.39	2181730.13
E2	5957618.69	2183401.23
E3	5959741.89	2184169.53
E4	5960588.09	2184421.13
E5	5961952.09	2184596.33
E6	5963510.49	2184630.03
E7	5964274.85	2184825.82

Prepared Under the Direction of JOHN D. CUNNINGHAM LT Colonel, C.E. District Engineer	Chart Date: Apr 08, 2020
Submittal: Hydro Survey Team Leader	Designed by: PDT
Recommended: Chief, Hydro Survey Section	Plotted by: PDT
Approved: Chief, Construction Branch	Checked by: PDT
	Drawn by: PDT



Federal Navigation Channel	Beacon, General	Contours
Shoaling Area	Obstruction Point	-26
Placement Area	Navigation Buoy	-25
Anchorage Area	Navigation Buoy	-24
Wreck Area	Shoalest Sounding*	-23
Submerged Wreck		-22
Angle Point		

NOTES:
 DRAWINGS NOT TO BE USED AS NAVIGATION. ONLY CHANNEL CONDITION AT DATE OF SURVEY. THE LOCATION OF ALL NAVIGATION AIDS ARE BASED ON INFORMATION PROVIDED BY THE U.S. COAST GUARD. BUOY LOCATION REPRESENT THE POSITION OF THE SINKER ONLY.

SURVEYED BY THE CORPS OF ENGINEERS.

SOUNDINGS WERE TAKEN BY FATHOMETER AND ARE SHOWN TO THE NEAREST TENTHS OF A FOOT.

SOUNDINGS ARE BASED ON THE DATUM OF MEAN LOWER LOW WATER AT THE LOCALITY.

PLANE GRID AND COORDINATES ARE BASED ON THE STATE OF CALIFORNIA COORDINATE SYSTEM, LAMBERT CONFORMAL PROJECTION, ZONE 1 NAD 83, CALIFORNIA, AS DESCRIBED IN SPECIAL PUBLICATION NO. 235, PUBLISHED BY THE NATIONAL OCEAN SURVEY.

PROJECT DEPTHS ARE AS FOLLOWS:
 BAR & ENTRANCE CHANNEL = 48 FEET
 NORTH BAY, SAMOIA TO MILE 5.0 & = 38 FEET
 EUREKA CHANNEL, FIELDS LANDING CHANNEL & MILE 5.0 TO 'N' STREET = 26 FEET

1:00 INDICATES THE NUMBER AND BEGINNING OF A LINE OF SOUNDINGS.
 SOUNDINGS ARE BASED ON TIDE GAUGES REFERENCED TO U.S.C. & G.S.
 SOUNDINGS REFERENCED TO SURVEY CONTROLS BELOW

NOAA TIDE STATION:
 9418767, NORTH SPIT
 PUBLISHED Oct 2011

CONTROL BENCHMARK:
 V 1403 1988 (LV0637)
 OPUS April 2020

TIDES:
 MLLW CORRECTIONS DERIVED FROM VDATUM v4.0.1 USING GEOID18
 ORTHOMETRIC HEIGHTS

POSITION:
 RTK POSITIONING

CALIFORNIA
 HUMBOLDT COUNTY
**HUMBOLDT BAY
 EUREKA CHANNEL
 CONDITION SURVEY**
 1-5 APRIL 2020

**Sheet
 Reference
 Number**
 2 of 2